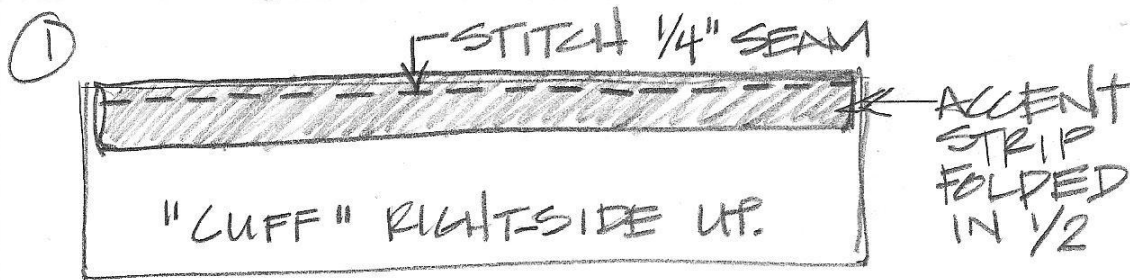
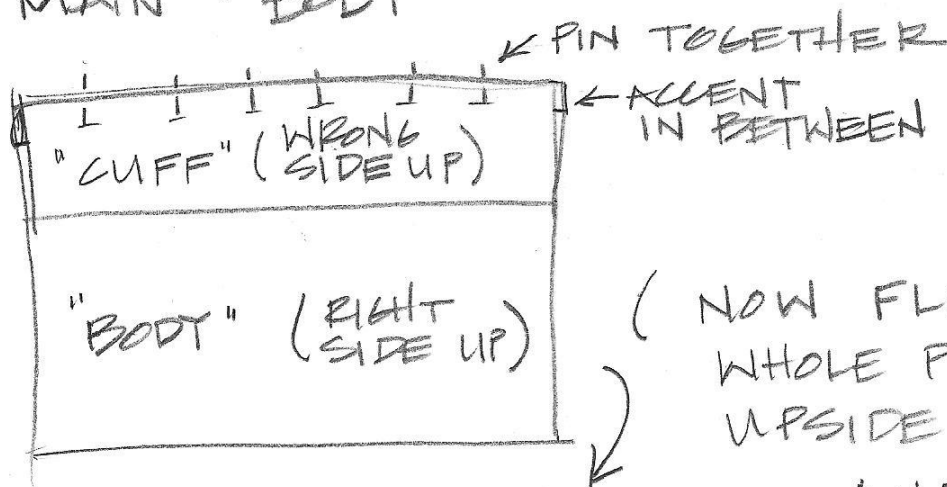


PILLOWCASE PROJECT

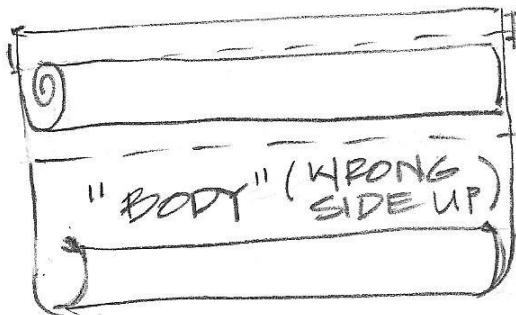
Body - 3/4 yard (27 inches) Cuff - 1/3 yard (12 inches) Accent - 2 1/2 inches



② PLACE UPSIDE DOWN ONTO THE MAIN "BODY"

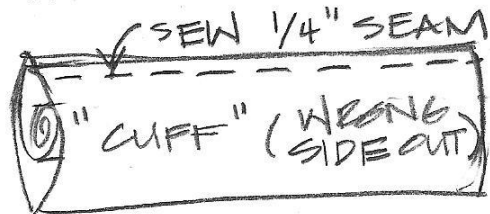


③



- AND -
BEGIN TO ROLL THE "BODY" UPWARDS UNTIL THE "CUFF" IS EXPOSED & CAN BE FOLDED IN 1/2 - ENCASING EVERYTHING.

④



TURN RIGHT SIDE OUT.

To finish: Fold in half, with RIGHT SIDES OUT, and stitch around raw edges with scant 1/4 inch seam.

Turn WRONG SIDES OUT, and stitch again with a scant 1/2 inch seam.